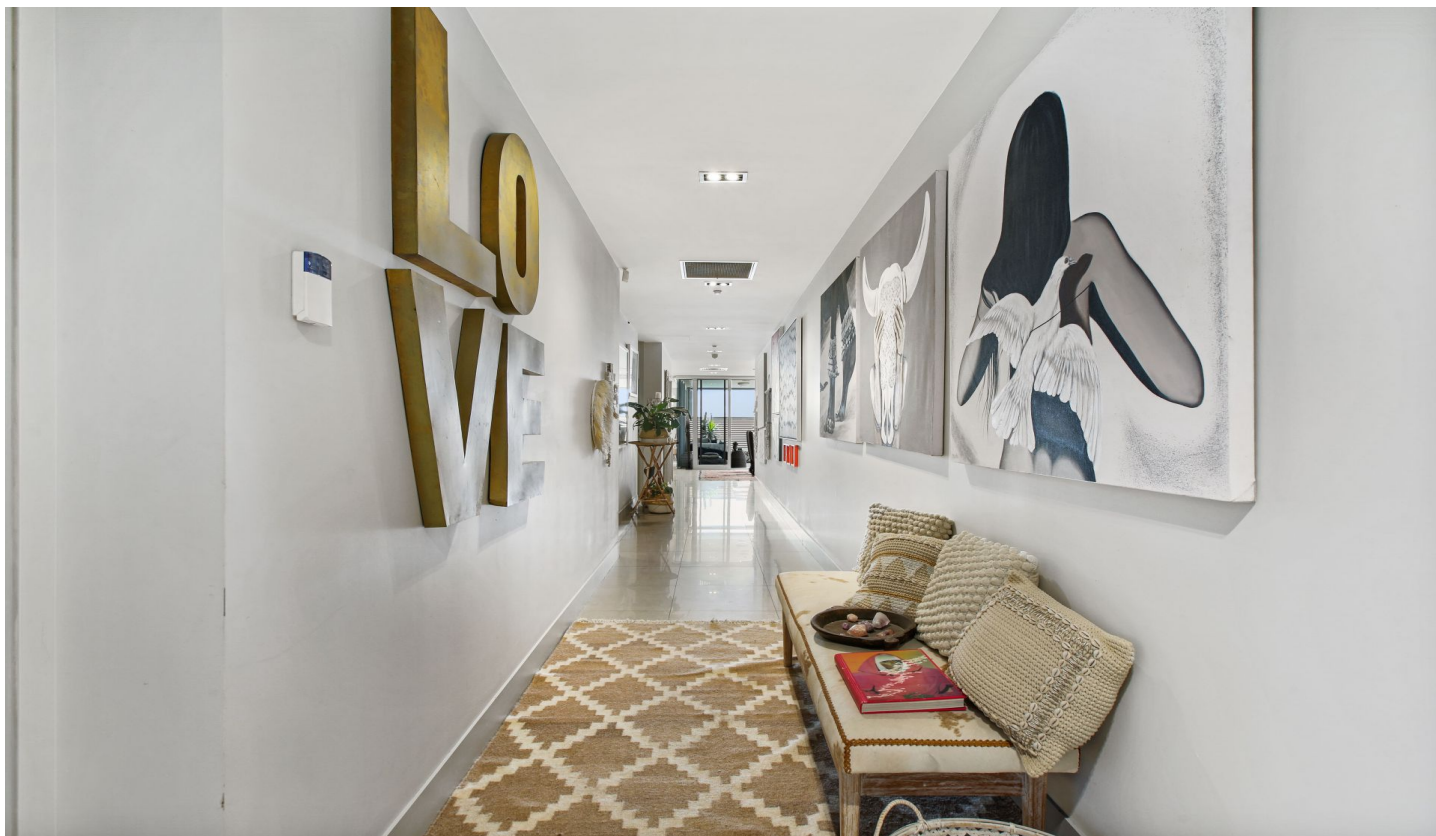




Short & Long Term Property Management



14/8-9 North Esplanade Glenelg North SA

2 2 1

Available between 24th May 2024 - 30th September 2024

Minimum 8 weeks

Wifi and utilities included in weekly rent amount

Positioned along the Esplanade you will have year-round access to the wonderful Glenelg North beach with walking or riding path into Glenelg and further.

With an island position in the group and with privacy and exclusivity from your elevated balcony terrace and garden it makes the perfect spot for a cup of tea or sunset drink.

Guests will love everything this location has to offer. From being just a 2-minute stroll to the ocean, or 3 minute drive to Cosmopolitan Jetty Road, 8 minute walk to the marina and restaurants and everything the area has on offer, while still being far enough away to avoid the hustle and bustle of

Price : \$1000 Per Week all utilities included in rent

View : <https://www.pennyriggspm.com.au/lease/sa/western-beachside-suburbs/glenelg-north/residential/apartment/7988099>



Rachel Burton
08 8353 0932